



Case management redesign - updates on draft service design
Special Needs Purchasing stakeholder meeting
March 11, 2019

Lisa Cariveau

Community and Care Integration Reform | Community Supports and Health Care Administrations

- Update on the draft service design
- Information on how to give your input

Case management service areas

Medicaid-funded case management in Minnesota includes:

- Targeted Case Management (TCM)
 - Adult mental health TCM
 - Children's mental health TCM
 - Vulnerable adult TCM
 - Developmental disability TCM
 - Child welfare TCM
 - Relocation services coordination TCM

Case management services areas (continued)

- Waiver Case Management
 - Community Alternative Care (CAC)
 - Community Access for Disability Inclusion (CADI)
 - Developmental Disabilities Waiver (DD)
 - Elderly Waiver (EW)
 - Brain Injury (BI)
 - Alternative Care (AC)
- Non-MA funded Developmental Disabilities Case Management

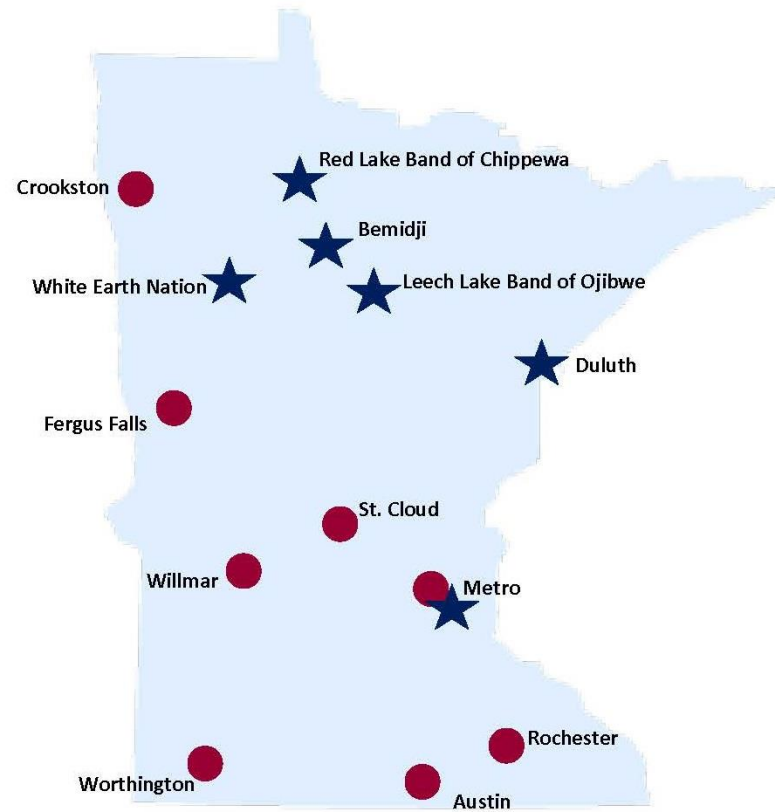
Initial design team

The initial design team was created to draft a definition for the service of case management and create a foundational set of standards around the delivery of the service so that **people know what they can expect and rely on.**

The primary purpose of this team was to create a **draft** service design to be reviewed more broadly so that as many people as possible can provide input into the design.

Community engagement

Community events



★ Tribal community

Additional sites for community events may be added.

Draft service design

- Includes **foundational policies and expectations** that would be required of all case management services.
- The foundational policies and expectations will be expanded upon to reflect additional expectations based on the needs of a specific population, expertise needed to provide the service to a specific population or to meet federal requirements for specific service areas.

Vision for case management

Services are simple, flexible, person-centered, culturally responsive, universally available to those who qualify for them, and are effective in assisting people and families to access formal and informal supports.

Goals of case management

- Assist people and families to access formal and informal services and supports that help people achieve their goals and meet their basic needs
- Promote health, safety, and stability across settings and situations
- Support individually meaningful connections to family, friends and communities
- Support the quality of life as defined by the person

Draft service design- components

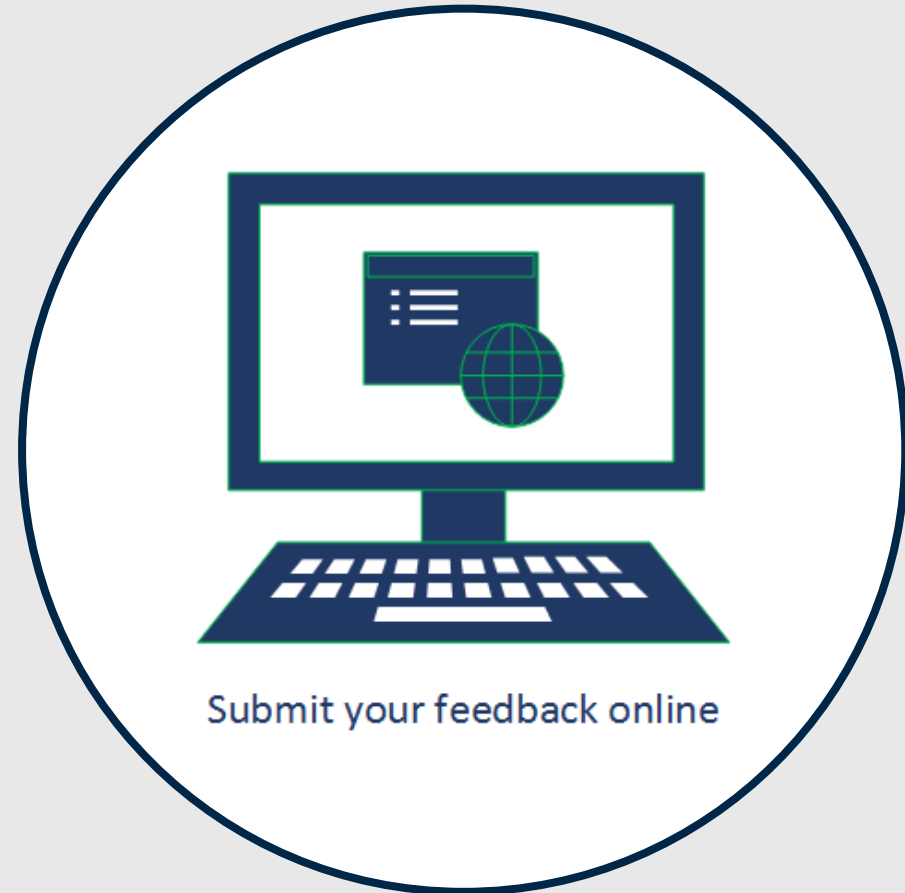
Service design components (assess, plan, refer, monitor)

- Expected activities
- Standards for how the service should be delivered
- Policies regarding implementation of the service component

Draft service design- highlights

- Solidified definitions and expectations
- Person at the center
- Elements that must be included in an assessment within case management
- Elements that must be included in a plan
- Expectations of communication and delineating roles when someone has more than one case manager or care coordinator

Call for input



Questions?



Email

dhs.cmredesign@state.mn.us



Call

651-431-4895

Closing



Thank you!

Lisa Cariveau

Lisa.Cariveau@state.mn.us

651-431-5827