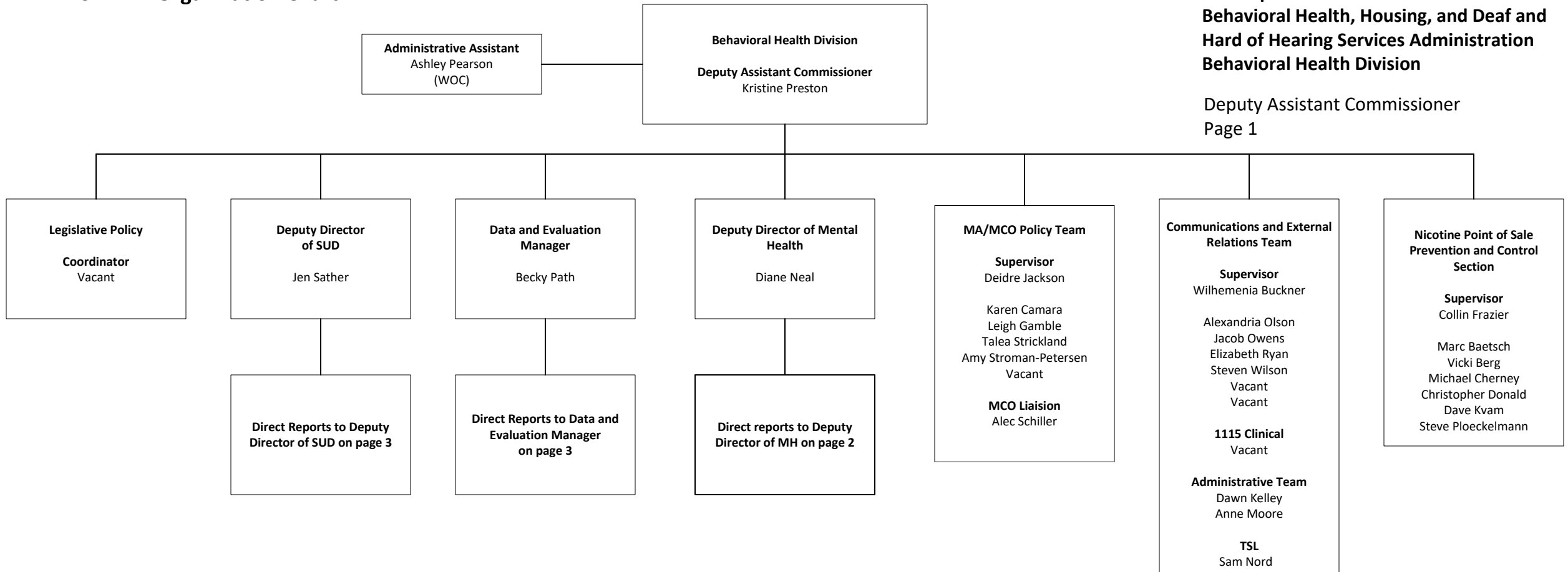


MN DHS BHD - Organization Chart

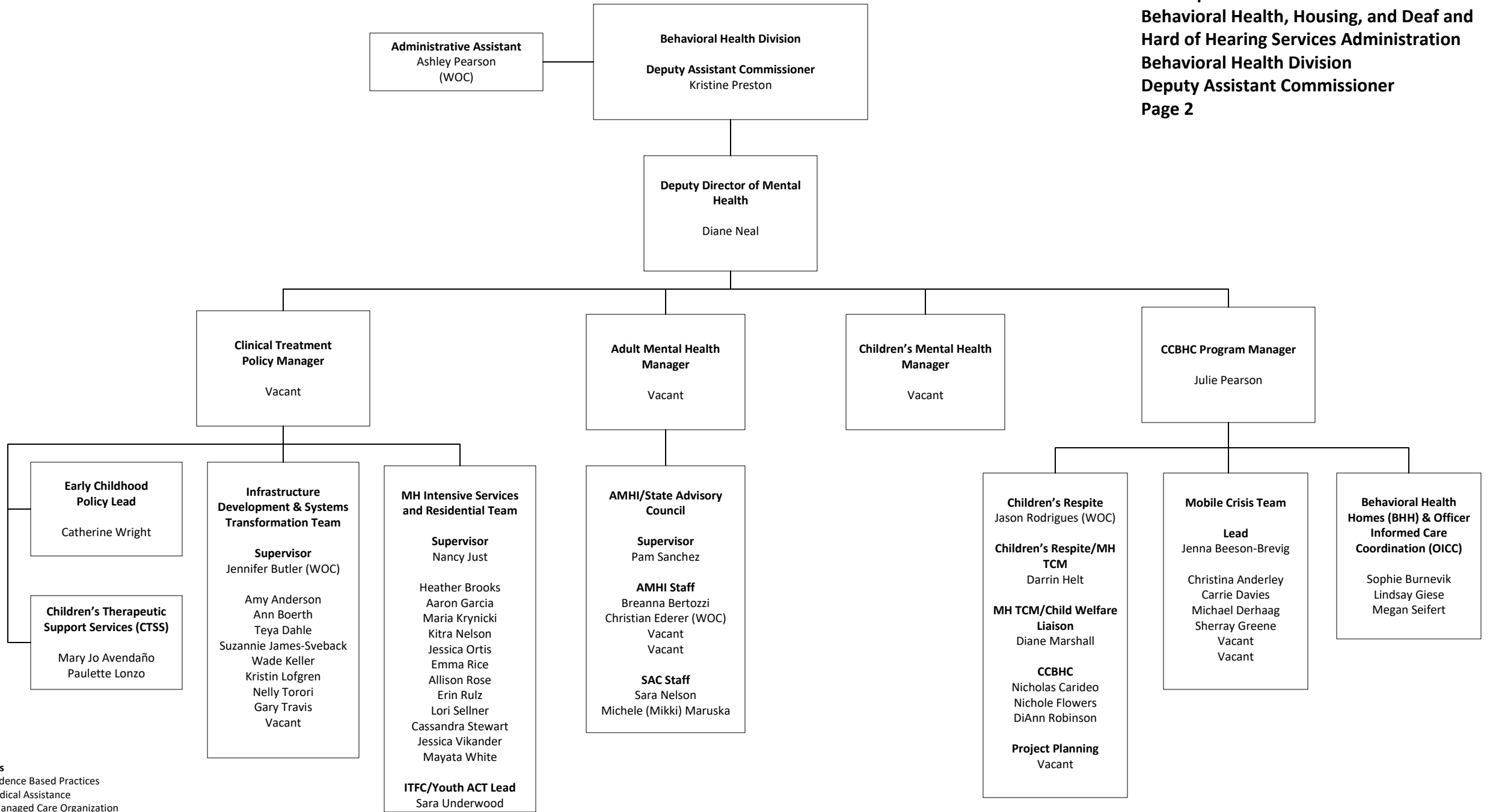
MN Department of Human Services Behavioral Health, Housing, and Deaf and Hard of Hearing Services Administration Behavioral Health Division

Deputy Assistant Commissioner
Page 1

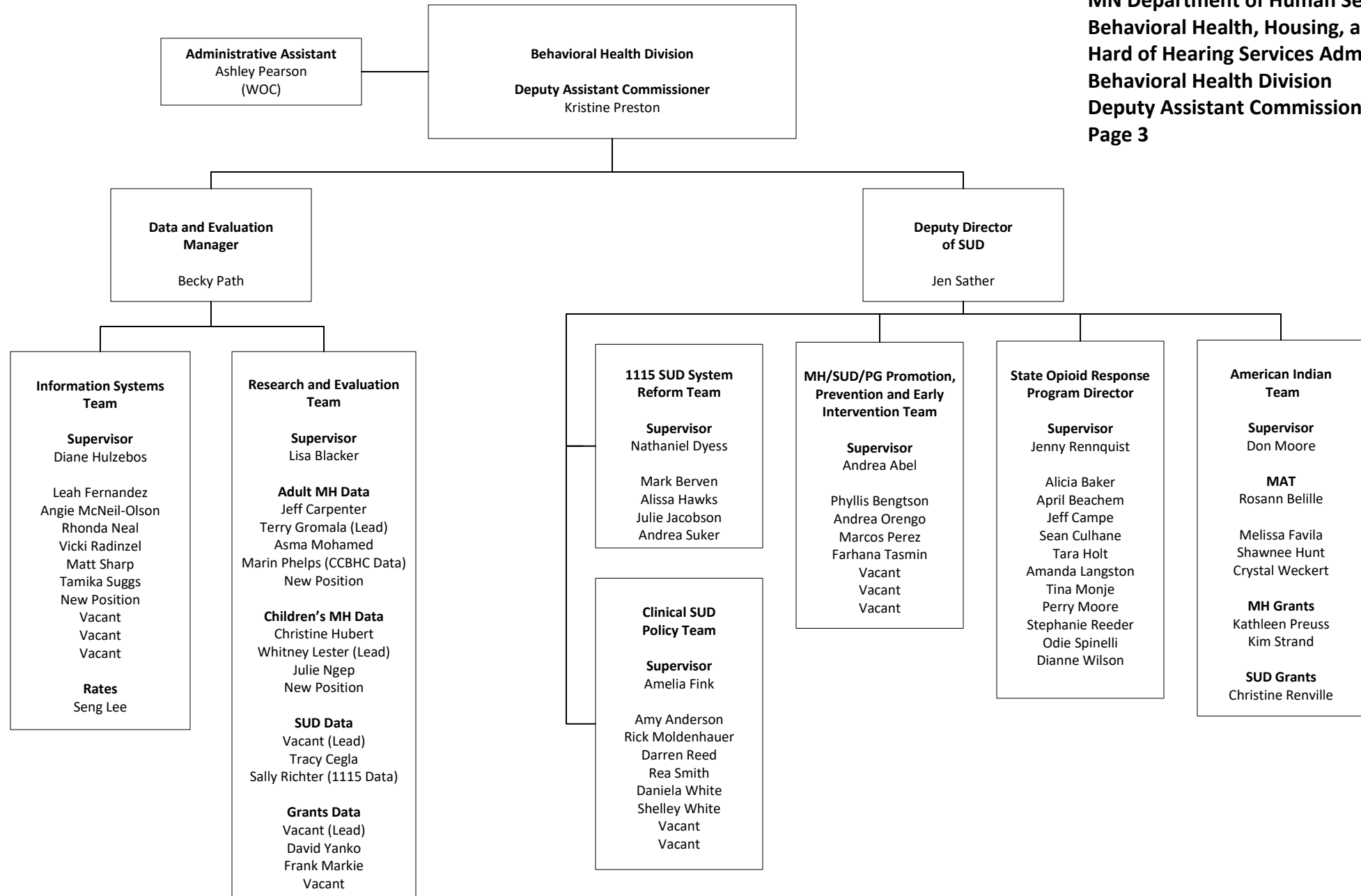


Acronyms

EBP = Evidence Based Practices
 MA = Medical Assistance
 MCO = Managed Care Organization
 MH = Mental Health
 PG = Problem Gambling
 PRTF = Psychiatric Residential Treatment Facility
 SUD = Substance use Disorder
 WOC = Working out of class



Acronyms
 EBP = Evidence Based Practices
 MA = Medical Assistance
 MCO = Managed Care Organization
 MH = Mental Health
 PG = Problem Gambling
 PRTF = Psychiatric Residential Treatment Facility
 SUD = Substance use Disorder
 WOC = Working out of class



Acronyms
 EBP = Evidence Based Practices
 MA = Medical Assistance
 MCO = Managed Care Organization
 MH = Mental Health
 PG = Problem Gambling
 PRTF = Psychiatric Residential Treatment Facility
 SUD = Substance use Disorder
 WOC = Working out of class