

Age-Friendly Health Care: The Minnesota Northstar GWEP

James T. Pacala, MD, MS

Teresa Schicker, MPA



UNIVERSITY OF MINNESOTA

Driven to DiscoverSM

U.S. DEPARTMENT OF HEALTH AND HUMAN SERVICES



Bureau of Health Workforce
Division of Medicine and Dentistry

Geriatrics Workforce Enhancement Program

Funding Opportunity Number: HRSA-19-008

Funding Opportunity Type: New and Competing Continuation

Catalog of Federal Domestic Assistance (CFDA) Number 93.969



UNIVERSITY OF MINNESOTA
Driven to Discover®





UNIVERSITY OF MINNESOTA
Driven to Discover®



Minnesota Northstar GWEP



The University of Minnesota received a 5-year, \$3.74 million award of federal funding from HRSA, the Health Resources and Services Administration Geriatrics Workforce Enhancement Program (GWEP) starting in 2019.

mngwep.umn.edu



5 Years - 5 Goals - 13 Projects

1. [Bringing Together Minnesota's Best Minds in Geriatrics Care and Education](#)
2. [Educating Current and Future Health Professionals in Age-Friendly Care](#)
3. [Transforming Primary Care Clinics for Age-Friendly Care and Learning](#)
4. [Offering Public Education and Support for Families and Direct Care Workers](#)
5. [Focusing on Dementia Care, Support, and Safety](#)

[Learn more about our 5 goals and 13 projects >](#)



Objective 1. Form a partnerships UMN, Fairview, six additional community organizations to train healthcare professionals in high value care for older adults.

COMMUNITY ADVISORY BOARD	
<i>Provide overall strategic vision, direction, and accountability</i>	
<p>Community-University Health Care Center Colleen McDonald Diouf, CEO <i>Primary site for interprofessional education and clinic transformation</i></p>	<p>Minnesota Gerontological Society Tom Hyder, Executive Director <i>Educate and connect to statewide geriatrics healthcare professionals and direct care workers</i></p>
<p>Fairview Health Services Kim DeRoche, MD, Director of Primary Care Service Line <i>Community-based health care system for transforming primary care clinics to age-friendly sites</i></p>	<p>Dementia Friends Dawn Simonson, Director of Metropolitan Area Agency on Aging <i>Advocate for promotion of dementia-friendly communities</i></p>
<p>Minnesota Association of Area Agencies on Aging (m4a) Lori Vrolson, Director of m4a Executive Director of Central MN Council on Aging <i>Represent all 7 state AAAs to advocate for community-based GWEP activities</i></p>	<p>Stratis Health (State QIO) Jane Pederson, MD, MS, Chief Medical Quality Officer <i>Share expertise in QI, capacity building, strategy, and systems change</i></p>
<p>Minnesota Board on Aging Kari Benson, Executive Director of MBA DHS Director of Aging and Adult Services <i>Represent MN Dept of Human Services; advocacy and policy for older adults</i></p>	<p>Minnesota Leadership Council on Aging Rajean Moone, Executive Director <i>Represent 30 community organizations serving older adults in Minnesota</i></p>
Members of Administrative Core (listed below)	



Objective 2. Provide geriatrics training to a wide variety of healthcare providers and interprofessional learners in Minnesota.

Activity 2a. Create Repository of educational resources spanning the full range of health professional trainees and learner levels.

Activity 2b. Deliver innovative and effective Interprofessional Geriatrics Education to address specific primary health needs of older adults.

- Interprofessional Geriatric Case Competition
- Interactive modules



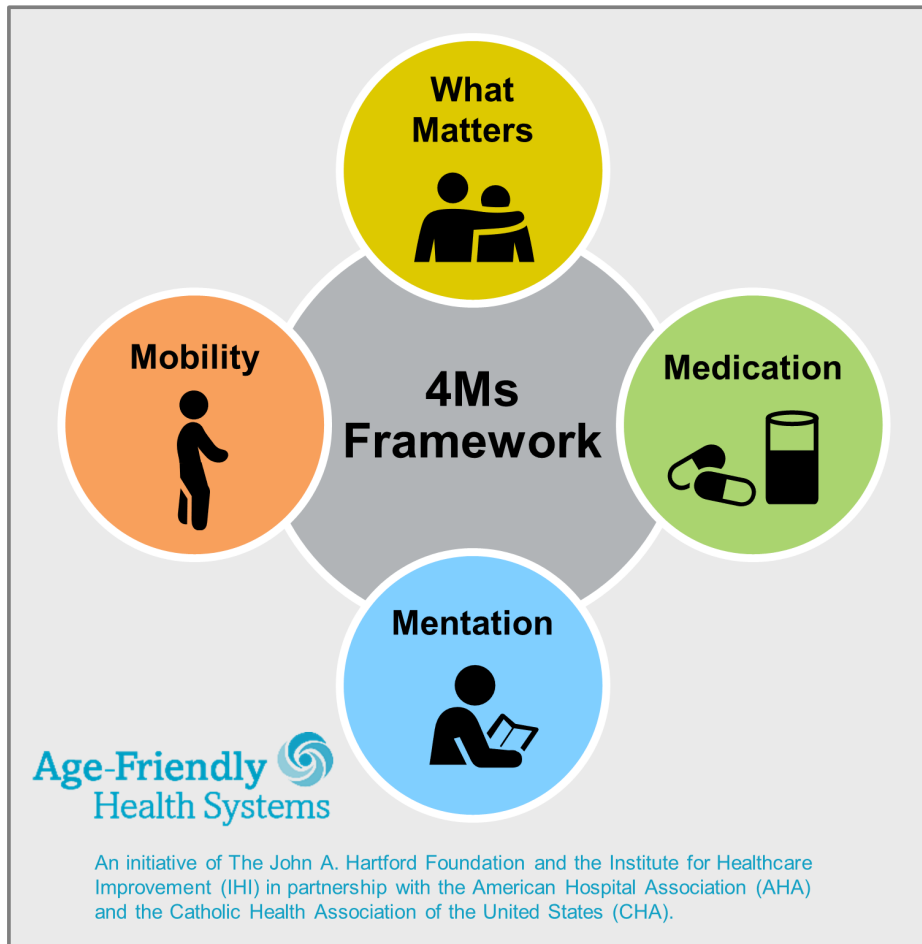
Objective 3. Transform primary care sites to provide Age-Friendly Care throughout the State of Minnesota.

Activity 3a. Transform Primary Care Training Clinics

Activity 3b. Transform Primary Care Practices: all 56 community clinics in the M Health Fairview system's Primary Care Service Line



What Is Age-Friendly Care?



What Matters

Know and align care with each older adult's specific health outcome goals and care preferences including, but not limited to, end-of-life care, and across settings of care.

Medication

If medication is necessary, use Age-Friendly medication that does not interfere with What Matters to the older adult, Mobility, or Mentation across settings of care.

Mentation

Prevent, identify, treat, and manage dementia, depression, and delirium across settings of care.

Mobility

Ensure that older adults move safely every day in order to maintain function and do What Matters.

Objective 4. Deliver community-based outreach and support for older adult patients, their families, their caregivers, and direct care workers.

Activity 4a. Support ADRD caregivers through Caring For a Person With Memory Loss conference.

Activity 4b. Deliver the Dementia Educational Experience Roadshow (DEER), skills training and education in-person and via telehealth.

Activity 4c. Offer asynchronous/ real-time education.

Activity 4d. Deliver public education programs through Minnesota Public Radio (MPR) and Hippocrates Cafe.



Objective 5. Train/support older adult patients afflicted with ADRD, their families, their caregivers, as well as healthcare providers and health professions learners in respectful, effective, patient-centered care and advocacy.

Activity 5a. Implement Dementia Friends information sessions.

Activity 5b. Implement Dementia Friendly Dental Practices.

Activity 5c. Deliver FIT-AD Certificate Program.

Activity 5d. Prepare geriatric workforce to maximize reasonable safety for LTC Patients—including patients with ADRD.



Northstar GWEP Reach



300 students
180 residents
120 faculty
500 doctors
100 NPs
1,000 staff



UNIVERSITY OF MINNESOTA
Driven to Discover[®]



Dashboard

Reach of Projects

The maroon counties indicate where Minnesota Northstar GWEP has traveled to serve Minnesota's older adults, their families, and their caregivers.



872

Health Professional Staff
and Learners Engaged

354

Patients / Families /
Caregivers Engaged

7

MN Counties Reached



Age-Friendly Glossary

Age-Friendly WHAT?	Who Sponsors It	Key Features	Example
Community	AARP / WHO	Application process signed by highest elected official; community planning / operations with age-friendly lens	Alexandria, Maple Grove, Mpls, Northfield
County			Hennepin, Olmstead
State			Minnesota
Health System	IHI / John Hartford Fn	Addresses 4Ms in medical care	Hospitals, ERs, clinics
Action Community	IHI	8-month process for health system to become Age-Friendly	Smileys clinic and CUHCC in Northstar GWEP
University	Dublin City University; AGHEd	Adoption / I	Michigan State

Governor's Council for an Age-Friendly MN

DRAFT recommendations with assumptions and appendix 4/16/2020

- The Age-Friendly design for the State of Minnesota will support the 8 Domains of Livability for older Minnesotans, which include Outdoor Spaces and Buildings, Transportation, Housing, Social Participation, Respect and Social Inclusion, Civic Participation and Employment, Communication and Information, Community and Health Services.



Governor's Council for an Age-Friendly MN

DRAFT recommendations with assumptions and appendix 4/16/2020

- The Age-Friendly design for the State of Minnesota will support the 8 Domains of Livability for older Minnesotans, which include Outdoor Spaces and Buildings, Transportation, Housing, Social Participation, Respect and Social Inclusion, Civic Participation and Employment, Communication and Information, Community and Health Services.



Age-Friendly Glossary

Age-Friendly WHAT?	Who Sponsors It	Key Features	Example
Community	AARP / WHO	Application process signed by highest elected official; community planning / operations with age-friendly lens	Alexandria, Maple Grove, Mpls, Northfield
County			Hennepin, Olmstead
State			Minnesota
Health System	IHI / John Hartford Fn	Addresses 4Ms in medical care	Hospitals, ERs, clinics
Action Community	IHI	8-month process for health system to become Age-Friendly	Smileys clinic and CUHCC in Northstar GWEP
University	Dublin City University; AGHEd	Adoption / I	Michigan State

Age-Friendly Glossary

Age-Friendly WHAT?	Who Sponsors It	Key Features	Example
Community	AARP / WHO	Application process signed by highest elected official; community planning / operations with age-friendly lens	Alexandria, Maple Grove, Mpls, Northfield
County			Hennepin, Olmstead
State			Minnesota
Health System	IHI / John Hartford	Addresses 4Ms in patient care	Hospitals, ERs, clinics
Action Community	IHI	Health process for system to become Age-Friendly	Smileys clinic and CUHCC in Northstar GWEP
University	Dublin City University; AGHed	Adoption / I	Michigan State



Thank You!



UNIVERSITY OF MINNESOTA
Driven to DiscoverSM