

Medicaid Services Advisory Committee Meeting

Public Meeting

Tuesday, May 10, 2022

12:30 – 2:30 pm

- This meeting is open to the public
- Please mute your line to reduce background noise
- Public comment will be taken at the end of the meeting or can be submitted in writing to krista.oconnor@state.mn.us



Medicaid Services Advisory Committee

May 10, 2022

Krista O'Connor | Director of Medicaid Strategic Planning and Project Management

Welcome



Housekeeping items

- WebEx Meeting
- Meeting is public
- Please mute your line when not speaking and state name prior to speaking
- Committee members can use the chat to provide comment or ask questions
- Public members can provide public comment today by putting “public comment: your name, and your organization” in chat
- Written public comment is also welcomed and encouraged. Please submit to krista.oconnor@state.mn.us
- Indicate conflicts of interest prior to providing comment



Health Care Administration Vision:

The Health Care Administration builds and operates affordable and efficient health care programs that improve the health of Minnesotans.

Purpose & duties

Purpose

- Provide guidance on key initiatives brought forward by DHS that affect Medicaid program administration, policy or Medicaid funded services
- Represent community groups and professional stakeholder organizations, Medicaid beneficiaries and caregivers, and various health care and long term services and supports professionals that influence the health and covered services of Medicaid populations
- Advise DHS; not a governing board.

Duties

- Provide guidance on specific policies, initiatives, and proposed program changes brought forward by DHS
- Act as liaisons back to individuals, organizations, and institutions that receive, facilitate, or provide Medicaid services

Meeting Agenda

- Welcome
- Updates
- Survey of Medical Assistance Enrollees
- Equity Analysis Framework and Structure
- Moving Home Minnesota
- Public Comment
- Next Meeting & Adjourn



Updates

Medicaid Services Advisory Committee

Public Health Emergency Unwinding

- The US Department of Health and Human Services Extended public health emergency up to July 15, 2022
- HHH pledged to give 60 day notice before terminating the PHE, We will know mid-may if extended again
- End of the PHE triggers the return to annual renewal processes for MHCP

- MHCP enrollment has increased more than 22% during COVID
- Some will lose coverage because they will no longer meet eligibility requirements
- Some will remain eligible, but will lose coverage for failure to return paperwork, known as “churn”
- DHS developing comprehensive plans to prevent “churn”
- One facet includes adding text and email outreach
- Contact krista.oconnor@state.mn.us to provide input on text and email messages

2022 Legislative Session

- Two weeks left of session
- Many of the Health Care Administration's items in the house health and human Services omnibus bill
- Focus on reducing barriers, closing gaps in coverage and easing the process of restating MA renewals following the end of the federal PHE
- [Fact sheets / Minnesota Department of Human Services \(mn.gov\)](#)

Questions





Survey of Medical Assistance Enrollees

Justine Nelson, PhD Research Scientist, HCA



Objectives:

- Hear from MA enrollees on what aspects of the MA program they think need to be improved, and what the improvements should look like.
- Provide DHS directors and managers with answers to their timely program and policy questions.

Collaborative effort between Wilder Research and DHS staff in:

- Health Care Administration (HCA)
- Community Supports Administration (CSA)
 - Megan Loew is leading the effort in CSA.

Survey methods and Reporting

Method

- The survey can be done online (in English, Spanish Somali, or Hmong) or on paper (in English only)
- 18,000 enrollees age 18-64 will be invited to participate. We expect about 1,800 will participate, and those that do will receive a \$15 gift card to Target or Walmart
- The sampling design will allow us to report what MA enrollees overall have to say, as well as to report the results by six racial/ethnic groups



What does the survey ask about?

- 1) Applying for MA: What is the MA application process like currently, and what resources and tools would people like to use while enrolling?
 - Informed by HCA's Health Care Eligibility and Enrollment (HCEA), Health Care Eligibility Operations (HCEO), and the Business Solutions Office.
- 2) Access to health care: How challenging is it for enrollees to find health care providers and get the care they need?
 - HCA's Purchasing and Service Delivery (PSD)
- 3) Clinical care: How engaged are enrollees in their treatment plans?
 - MHCP Medical Director, Clinical Director of Behavioral Health, DCT's Exec. Med. Dir Medical Services

- 4) Cultural responsiveness: Are enrollees' health care providers culturally responsive?
 - American Indian liaison in CSA, Equity Coordinator in HCA
- 5) Telehealth: How do enrollees rate the quality and access of audio-only and video telehealth services, and how do telehealth services impact access to health care?
 - HCA's PSD, CSA's Behavioral Health Division (BHD)
- 6) Financial well-being: Are MA enrollees getting the public assistance and tax credits they are eligible for?
 - Children and Family Services administration

- Wilder Research will release a report at the end of 2022 on what we have learned about telehealth
- Results of the other domains will be reported in ways that meet the needs of the particular division staff that requested them

For more information on the survey or the reports, contact Justine Nelson at

- Justine.Nelson@state.mn.us

- Questions
- Discussion: Areas of Interest
- Thank you



Equity Analysis Framework and Structure

MSAC Q2 – May 2022
Seth Kaempfer, HCA Equity Director

Agenda

- Introduction
- DHS Equity Policy
 - Equity Analysis Toolkit
- Equity Analysis & Equity Scan
- Q&A

DHS Equity Policy

All DHS employees are expected to incorporate equity considerations in **actions (policies, practices, procedures, rules, budgets and decision-making)** and in their daily work. DHS will provide employees with learning opportunities to support equity policy expectations. DHS employees will communicate how equity considerations are reviewed and the impact of the results of policies, practices, procedures, rules, budgets and decisions. Guidance for considerations can be found in the **DHS Equity Analysis Toolkit**.

- To ensure that each employee analyzes **actions (policies, practices, procedures, rules, budgets and decision-making)** through an equity lens with the purpose of reducing disparities, inequities in outcomes, and improving access to human services for communities the Department of Human Services (DHS) serves.

Equity Analysis Toolkit

The toolkit is used to minimize unanticipated and eliminate adverse consequences in a variety of contexts, including the analysis of proposed policies, institutional practices, programs, plans and budgetary decisions. Use of this toolkit is vital in preventing institutional racism and for identifying new options to remedy long-standing inequities

Comprised of:

- Equity Analysis
- Equity Scan

Equity Analysis Toolkit, page 2

It is:



A systemic, methodical examination of impacts of decisions, policies, programs, practices, and budgets on the following groups:

- Communities of Color, American Indians, Veterans, LGBTQIA+, Persons with Disabilities



An intentional pause



Best used early in the process



To be conducted with a variety of perspectives and stakeholders wherever possible



A way to ensure racial equity impacts are at the core of decision making – process improvement and prevention



A way to raise the voice of traditionally marginalized communities

Equity Analysis vs Equity Scan

Equity Analysis

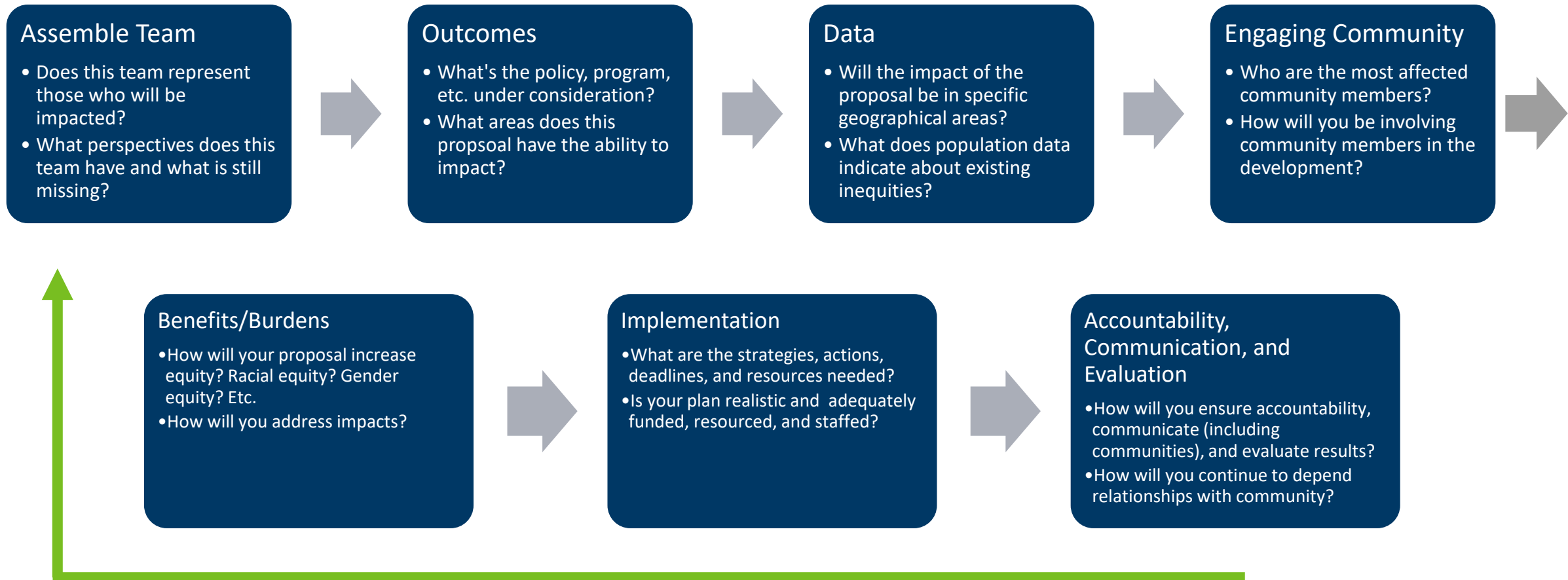
An equity analysis is an intentional examination for how different individuals and groups may be impacted by an action or decision. This information is used to improve process and close the gaps or disparities in decisions, programs, projects, etc.

The term equity analysis is an umbrella term to describe the process reviewing work or actions for disparate impact to populations or groups

Equity Scan

An equity scan is a specific type of equity analysis tool that can be used to re-review a process, project, program, or decision. An equity scan should be used when work or an action has already been reviewed with a formal equity analysis process and the results from the respective formal equity analysis process have been embedded.

Equity Analysis Process



Q&A





Moving Home Minnesota (MHM) Overview

What is Moving Home Minnesota?

- Federal Medicaid demonstration project
- Federal name: Money Follows the Person (MFP)
- Assists individuals with transitions from various institutions to community living
- Access to MHM services in addition to waiver and state plan services

Available Moving Home Minnesota Services

- Transition Planning
- Transition Coordination
- Transition Services
- Costs for Finding Housing and Employment
- Environmental Modifications
- Specialized Supplies and Equipment
- Personal Emergency Response Systems
- Pre-discharge Case Consultation and Collaboration
- Membership Fees
- Home Care Training – Family and Non-Family (formerly known as Post-Discharge Case Consultation and Collaboration)
- MHM Demonstration Case Management
- Comprehensive Community Supports
- Family Memory Care Intervention
- Overnight Assistance
- Respite Services
- Tools, Clothing, and Equipment for employment
- Supported Employment Benchmark Payments
- See [MHM Services Table for more information](#)

Expanded Service Options

- March 31st, 2022 the Centers for Medicare and Medicaid Services (CMS) issued an announcement of certain changes to supplemental services under the MFP Demonstration
- Expansion of MFP Supplemental Services
 - These are services that are intended to address critical barriers to transition including lack of affordable and accessible housing, food insecurity, and financial and administrative barriers to transitions.

Expanded Supplemental Services

- Short-term housing assistance: Cover up to 6-months of short term rental assistance and associated utility expenses to bridge the gap until the participant transitions to the community and housing is secured.
- Food security: Cover food pantry stocking for up to a 30 day period.
- Pre-transition activities: Cover payment for services such as home modifications, vehicle adaptations, pre-tenancy supports, community transition services and case management.
- Payment for securing a community-based home: Cover costs associated with securing a community-based home that are not coverable under Medicaid such as apartment application and administrative fees.

What Additional Service Ideas Do You Have?

- Record collection fees (medical records, driver's license or state ID, birth certificate)
- Guardianship, rep-payee or conservator fees
- Pest control and chore services before you move in
- Household and community set-up (unpacking groceries, hanging curtains)
- Essential clothing and personal supplies
- Small appliances (vacuum, microwave, air fryer)
- Culturally appropriate items, activities or supports (smudging, blessings)

Discussion

1. What additional services can we add?
2. Which ideas should we prioritize?
3. Additional comments or concerns?

Thank You!

Gina Smith

Gina.A.Smith@state.mn.us



Public Comment

Krista O'Connor, Director of Medicaid Strategic Planning and Project Management

Medicaid Services Advisory Committee

- Please state your name, organization (if relevant) and any conflicts of interest
- Please limit comments to approximately 2 minutes
- Written comments can be submitted to:
krista.oconnor@state.mn.us



Next meeting



Tuesday, November 8,
2022

12:30 – 2:30 pm

Remote option

Thank You!

Krista O'Connor

krista.oconnor@state.mn.us

651-207-3349