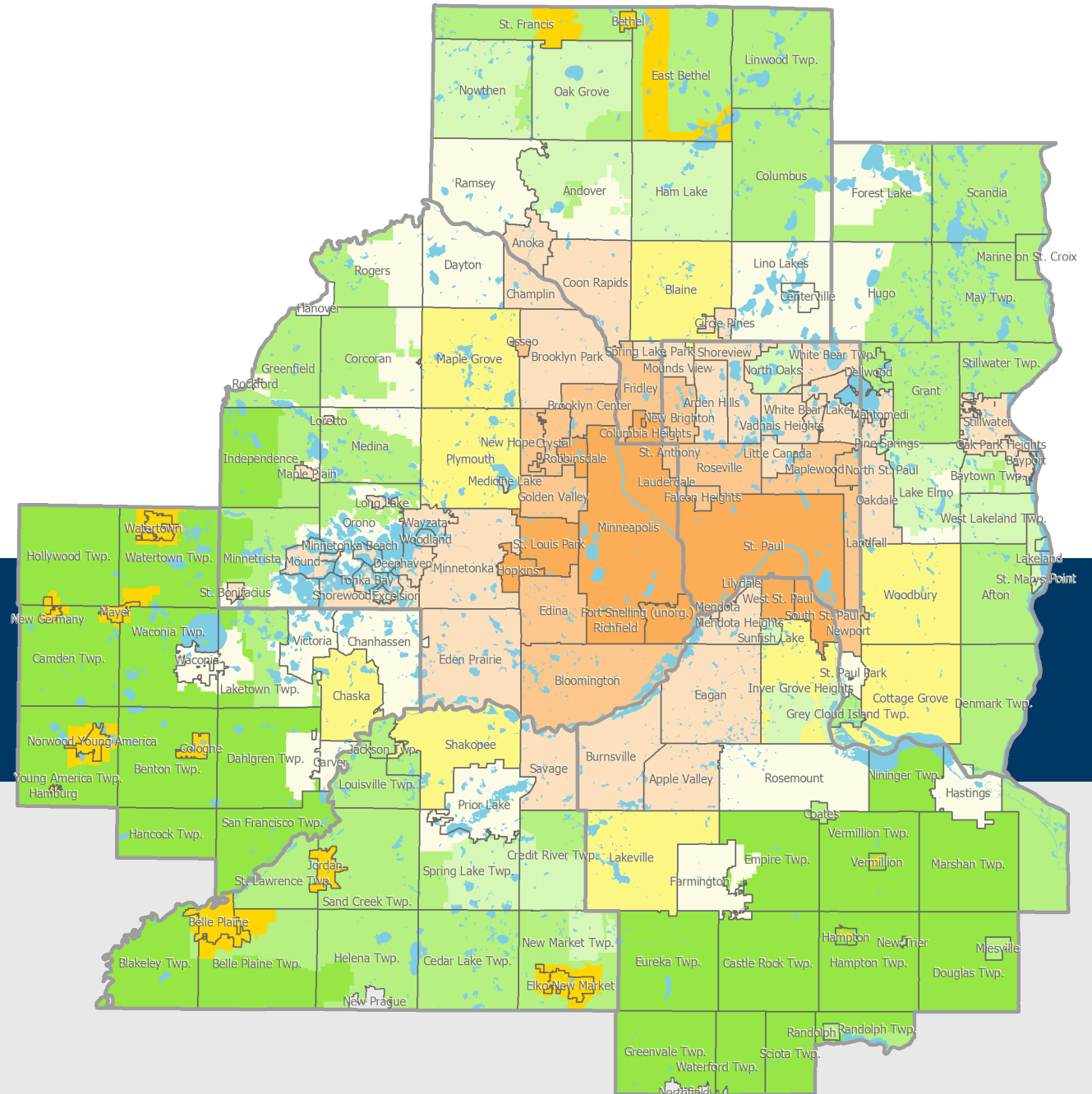




Metropolitan Council

Susan Vento, Metropolitan Council Member

AGE FRIENDLY
minnesota



Current policies and programs that highlight Age-Friendly



Regional Development Guide

- Thrive MSP 2040
- Regional System Plans: Parks, Transportation, Water Resources, Housing Policy Plan
- Our population is changing in ways that will influence future growth and development

Policies address changing demographics to 2040



Regional Parks and Trails

- 55+ parks (56 K acres)
- 400+ miles of trails
- 70 K acres park by 2040
- 1,000 miles trail by 2040
- Available to all
- 58 Million Visits/yr

Policies encourage park/trail design and facilities that meet changing recreational preferences, including providing amenities for an aging population

Age 55+ visit significantly more than other age groups



Transportation/Transit

Transportation Policy Plan

Policy/strategies to maintain/enhance existing facilities, better connect people - communities, provide more transportation choices that will support older residents

Metro Transit

- Serves 84 million riders/yr
- 14 % are 55+
- Accessibility with bus and facilities
- Reduced fares for seniors
- Shelter locations prioritization includes benefits for older adults



Metro Mobility

- Shared-ride public transportation for riders unable to use transit due to disability or health condition
- Trips provided for any purpose
- Increased demand over time
- 82% riders are 50+



Transit Link

- Dial-A-Ride service in areas of region where transit not available
- Weekly circulators with senior facilities on the routes

Current policies and programs that highlight Age-Friendly



Housing

HRA

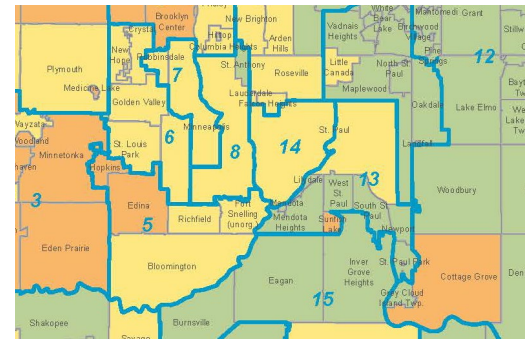
- Operate largest HRA in MN
- 7,200 families with low and moderate incomes
 - 20% with head of house age 65+

Housing Policy Plan

- *Policies* to work with regional funding partners to identify resources to support affordable housing development for the senior population
- Technical assistance to local governments on how to expand housing opportunities for seniors
- Locate new senior housing in places with access to services and amenities that seniors want and need

LCA

- Grant \$ to clean contaminated lands for redevelopment, improve transportation options, expand affordable housing and develop thriving neighborhoods.
- 1,100 grants to local governments
- \$400 million in LCA funding (since 1996)
- Includes awards to senior housing



Data and Research

- Downloadable regional data and research
- Reports on important regional trends
- Interactive data and mapping

Local Planning Assistance

- Sector Representatives – 188 communities
- Review long-range comprehensive plans
- Provide planning technical services
- Provide sources for community planning

State agency or other government partners



Collaboration ●-----●-----●

For the Council, acting collaboratively means:

- Being open to shared strategies, supportive partnerships, and reciprocal relationships.
- Convening the region's best thinkers, experts, and stakeholders to address complex regional issues beyond the capacity or authority of any single jurisdiction or institution.
- Providing additional technical assistance and enhanced information to support local planning and decision-making.

Stewardship Prosperity Equity Livability Sustainability



Highlight a data/report that would inform an Age-Friendly Council

RESEARCH BY TOPIC

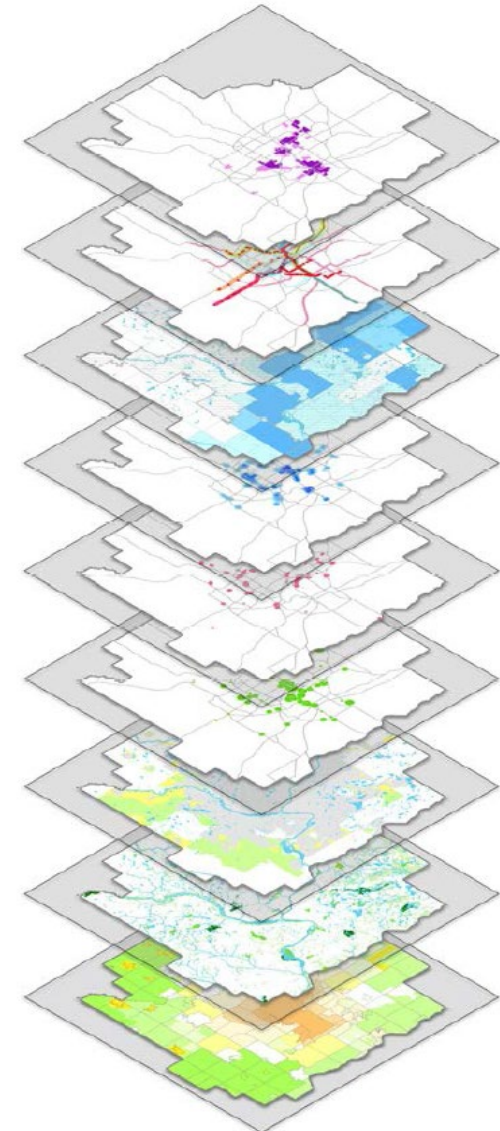
Data-driven insights to further regional conversations that matter

RESEARCH AND DATA	▼
Research by topic	
U.S. Census Data & 2020 Updates	
Annual Population Estimates	
Long-Range Forecasts	
Regional Policy Dashboards	
Community Profiles	
Download Data	
MAPS	▲
METROGIS	▲

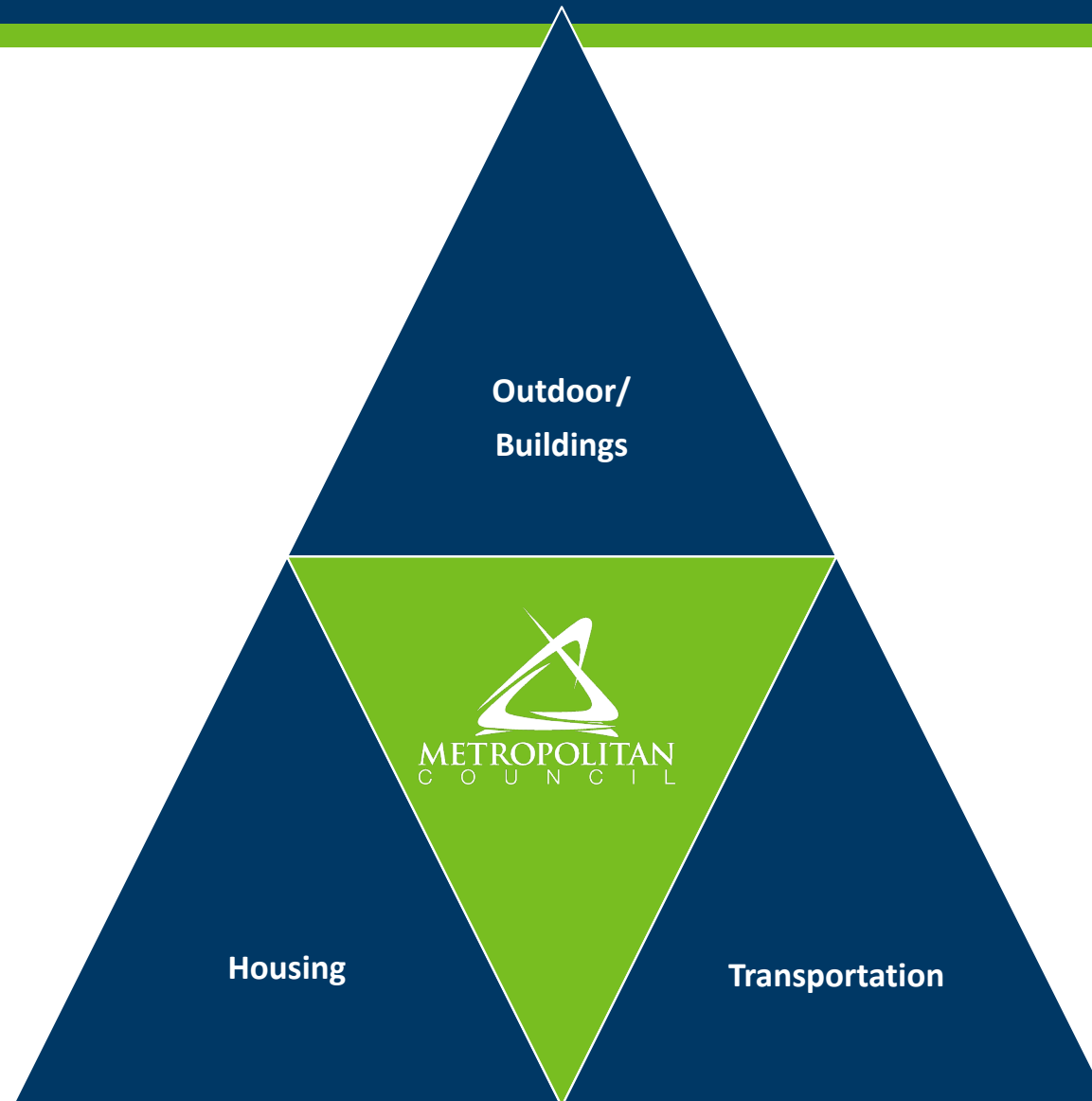
- CLIMATE
- DEVELOPMENT
- ECONOMY & WORKFORCE
- HOUSING
- INCOME & POVERTY
- LAND USE
- PARKS
- POPULATION
- REGIONAL DISPARITIES
- TRANSPORTATION

Data/Research/Reports

- Regional Trends: Housing /Jobs
 - MetroStats – Steady Growth and Big Changes Ahead: Forecast to 2040
 - Update of Regional Forecasts
- Annual Building Permit Survey Data
 - Includes data by housing Types
- Redevelopment Monitoring
- Affordable Housing Production Survey
- Interactive Regional Parks Map
 - Demographics surrounding parks
- Twin Cities Rent Trends
 - Twin Cities Rent Trends' is an interactive tool that visualizes rent and vacancy trends
- Travel Behavior Inventory – Transportation Data
 - Data that can be analyzed for how older adults travel and any differences between them and general population



Age-Friendly Matrix



Thank You!

Susan Vento

Metropolitan Council Member

Susan.Vento@metc.state.mn.us

612-360-3602

