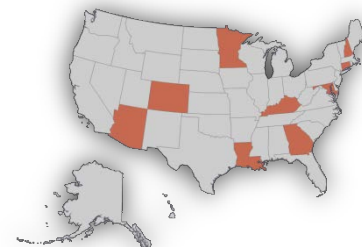




MN's **PHR for LTSS Demo** (funded by a CMS TEFT Grant) is a four year Planning and Demonstration Grant awarded to the MN Department of Human Services (DHS) by the Centers for Medicare & Medicaid Services (CMS) for **T**esting **E**xperience and **F**unctional **T**ools in Community-Based Long Term Services and Supports (TEFT) – April 1, 2014 through March 31, 2018.

What are the PHR for LTSS Demo Deliverables?

1. Demonstrate use of an untethered Personal Health Record (PHR) system with beneficiaries of Community-Based Long Term Services and Supports (CB-LTSS);
2. Identify, evaluate and test an electronic Long Term Services and Supports (e-LTSS) standard with the Office of National Coordinator's (ONC) Standards and Interoperability (S&I) Framework Process;
3. Field test a beneficiary experience survey within multiple CB-LTSS programs for validity and reliability; and
4. Field test a modified set of Continuity Assessment Record and Evaluation (CARE) functional assessment measures for use with beneficiaries of CB-LTSS programs.



What is the PHR for LTSS Demo Budget?

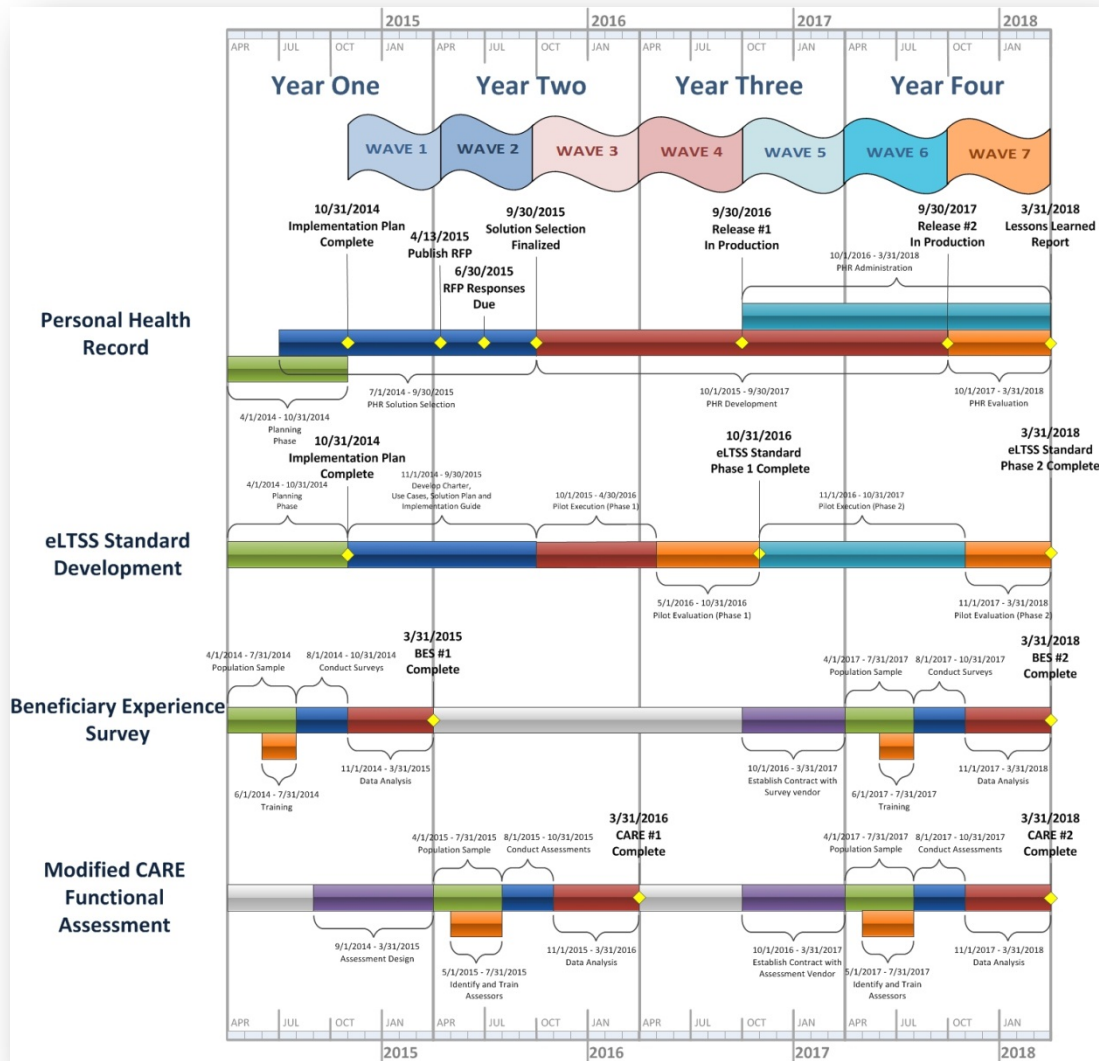
- The Project budget is \$4,000,000 over four years.

Other states receiving CMS TEFT Grants:
NH, MD, AZ, CO, GA, KY, LA, CT

How does the PHR for LTSS Demo Fit with Other EHR Initiatives in MN?

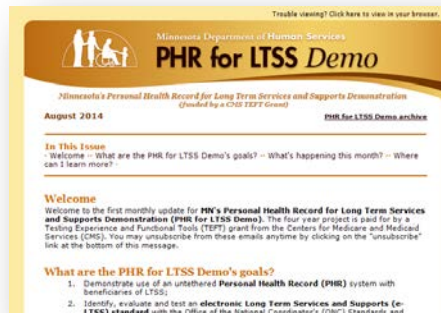
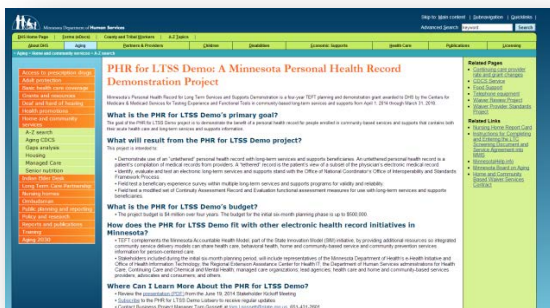
- Working with stakeholders from MN Office of Health Information Technology (OHIT), Aging and Disability service waivers (DHS), Counties, Managed Care Organizations, service providers, advocates and beneficiaries.
- Complements the Minnesota Accountable Health Model by providing additional resources so integrated community service delivery models can share health care, behavioral health, HCBS and community prevention services information for person-centered/activated care.

What is the Timeline for the PHR for LTSS Demo?



Where Can I Learn More About the PHR for LTSS Demo?

- Contact Business Project Manager Tom Gossett
 - Email: tom.l.gossett@state.mn.us
 - Phone: 651-431-2601



Check out the PHR for LTSS Demo Web Page:
http://www.dhs.state.mn.us/main/dhs16_184574

Subscribe to receive monthly email updates on the PHR for LTSS Demo Web Page