

HCBS Final Rule Evidentiary Package

Benedictine Adult Day Center



Setting information

Setting name: Benedictine Adult Day Center	ID # 830732
Street address: 1455 W. Broadway St., Winona, MN 55987	Phone: 507-457-3810
Setting website, if applicable: Benedictine Adult Day Center website https://www.benedictineliving.org/winona-mn/adult-day-care/	Date of site visit: 1/10/2022

Waiver service type

Waiver service	Service type:
<input checked="" type="checkbox"/> Alternative Care (AC) <input checked="" type="checkbox"/> Elderly Waiver (EW) <input checked="" type="checkbox"/> Brain Injury (BI) <input checked="" type="checkbox"/> Community Access for Disability Inclusion (CADI) <input type="checkbox"/> Community Alternative Care (CAC) <input checked="" type="checkbox"/> Developmental Disabilities (DD)	Adult Day Service

Reason for heightened scrutiny

Prong type	Category	Type of setting
Prong 1 Located in a Public or Private Institution	Name of Institution	Choose an item. Benedictine Saint Anne

Note: The term people/person (resident for residential settings) refers to people receiving Medicaid HCBS waiver service

General summary

Benedictine Adult Day Center is located in Winona, a city in Winona County, Minnesota. Winona is located approximately 50 miles east of Rochester, Minnesota. The population was estimated at 26,854 per census data in 2019. Benedictine Adult Day Center is located in a residential and commercial neighborhood, about a half mile to a public park and one mile to the public high school. It takes approximately seven minutes to drive to the main downtown commercial district.

Benedictine Adult Day Center is an adult day setting. At the time of the site visit, the setting served 30 people supported by a home and community-based waiver program and five people supported by other funding sources. Each day, the setting serves approximately 10-20 people.

Benedictine Adult Day Center is located on a continuum of care campus that includes Callista Court, a customized living setting, and Benedictine Saint Anne, a nursing facility that provides skilled nursing care and rehabilitation services. Benedictine Health System, a non-profit, faith-based corporation, owns and operates the entire campus. Benedictine Health System is governed by a board of directors composed of faith-based, business and community members.

Adult day provider standards/qualifications

Licensure requirements and other state regulations for adult day services clearly distinguish these services/settings from institutional licensure or regulations.

Adult day services provided in center-based facilities are directly licensed by the Department of Human Services. Adult day services serve functionally impaired adults on a regular basis for periods of fewer than 24 hours during the day in a setting that is not a residence.

Adult day service definitions that support the setting requirements

Minnesota's Community Based Services Manual (CBSM) provides the following requirements for [Adult day services](#):

http://www.dhs.state.mn.us/main/idcplg?IdcService=GET_DYNAMIC_CONVERSION&RevisionSelectionMethod=LatestReleased&dDocName=id_002205#

Adult day services must:

- Be based on the person's assessed needs
- Be directed toward the achievement of specific outcomes identified in the person's support plan
- Offer opportunities to participate in community groups (e.g., senior citizen centers or clubs, generic service organizations, adult education)
- Provide age-appropriate tasks and materials
- Provide community integration opportunities to enhance the person's social and physical interaction with people without disabilities
- Provide the supports necessary either to maintain or improve the person's ability to care for him or herself.

Prong 1 and Prong 2 settings

Meaningful distinction between the facility and HCBS setting

States must submit strong evidence that the setting presumed institutional has the characteristics of an HCBS setting and not an institutional setting.	
Determination	Summary
<input checked="" type="checkbox"/> Met <input type="checkbox"/> Unmet <input type="checkbox"/> Not applicable	<p>Interconnectedness between the facility and the setting in question, including administrative or financial interconnectedness, does not exist or is minimal.</p> <p>Benedictine Adult Day Center and Benedictine Saint Anne share administrative oversight, but the two settings have separate budgets, day-to-day operations and staffing. Benedictine Adult Day Center has a dedicated day-to-day operations manager, and dedicated full-time staff that provide services to people at the setting. Benedictine Adult Day Center has a separate address and entrance apart from the nursing facility. Food services are prepared in a centralized kitchen and served in a dedicated dining room. Benedictine Adult Day Center has a dedicated activity program and activities and events for people at the setting.</p>

<input checked="" type="checkbox"/> Met <input type="checkbox"/> Unmet <input type="checkbox"/> Not applicable	<p>To the extent any facility staff are assigned occasionally or on a limited basis to support or back up the HCBS staff, the facility staff are cross-trained to meet the same qualifications as the HCBS staff.</p> <p>Administration and staff confirmed that all staff that work in the adult day setting are trained specifically for home and community-based support in a manner consistent with the HCBS settings regulations. Administration confirmed that nursing facility staff are not scheduled to work with people at the adult day setting on the same shift and vice versa.</p>
<input checked="" type="checkbox"/> Met <input type="checkbox"/> Unmet <input type="checkbox"/> Not applicable	<p>People at the setting in the setting in question do not have to rely primarily on transportation or other services provided by the facility setting, to the exclusion of other options.</p> <p>Benedictine Adult Day Center is located in an urban area with available public transportation. There is a public bus stop on West Broadway Street a short walk from the front door of the setting. The campus also has an accessible activity bus that people use for local transportation needs such as shopping and non-medical appointments. The setting also uses a campus van that provides transportation to medical appointments in the area. People at the setting also use local private transportation providers, such as city taxis and specialty transportation providers such as "Handi Van." Some people at the setting enrolled in HCBS waiver programs may use medical transportation services to travel to medical appointments covered under waiver programs. People at the setting also use family owned transports and their own vehicles. Some people at the setting use the transportation provided by the adult foster care homes in which they live. Benedictine Adult Day Center has also received grant funding that helped subsidize transportation costs for program participants. Transportation options are posted on bulletin boards and provided in the admission packet and participant handbook.</p>

The setting provides HCBS services in a space that is distinct from the space that institutional services are provided.

Benedictine Adult Day Center provides services in a space that is distinct from the space used by the nursing facility. Adult day services are provided on the first floor of the building that also houses the customized living setting which is connected to the nursing facility by an indoor hallway. The setting has separate outside signage and a separate entrance from the nursing facility. In the picture below, Benedictine Adult Day Center is outlined in yellow, and Benedictine Saint Anne is outlined in red.

- Met
- Unmet
- Not applicable



Aerial view of Benedictine Adult Day Center, which is highlighted in yellow (smaller rectangle at left), and Benedictine Saint Anne, outlined in red (larger rectangle at right)

Community engagement opportunities and experiences

Benedictine Adult Day Center staff support community engagement through activities in the community at large. Staff notify people at the setting of community activities through a calendar of community events and staff announcements and reminders. According to setting staff and people in the setting, community activities may include:

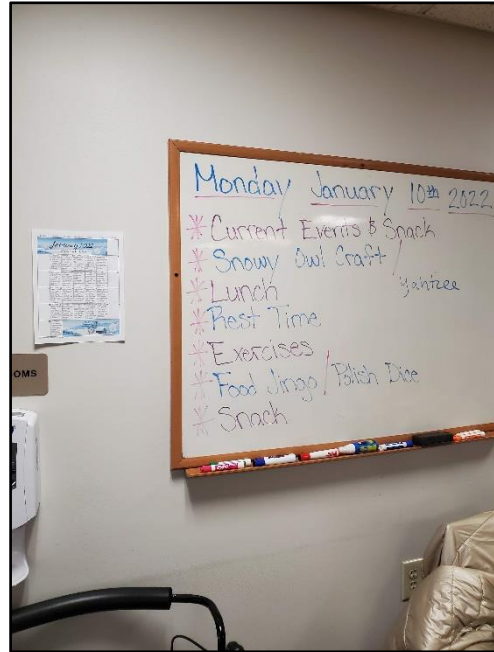
- Outings to events in town, such as music and theater trips
- Public parks
- Activities at the customized living setting
- Restaurants
- Civic events, such as parades and holiday celebrations
- Nature activities

People also have the option to go out on their own, with family and friends, and by using local transit options and volunteer drivers. These activities include:

- Faith-based events
- Shopping trips
- Restaurants
- Civic events

The setting provides a daily calendar of activities for people to participate in at the setting. People are also informed of on-site activities through the monthly activity calendar, bulletin board announcements, and staff announcements and reminders. On-site activities may include: Wellness activities, games and crafts, interest groups, music appreciation, faith-based activities, computer activities, movies and walks around campus.

People at the setting have the option to choose not to participate at any time. According to staff and residents, they are offered alternative times or activities or are free to participate in activities of their choosing.



Activity calendars



Computer area and chair

HCBS characteristics

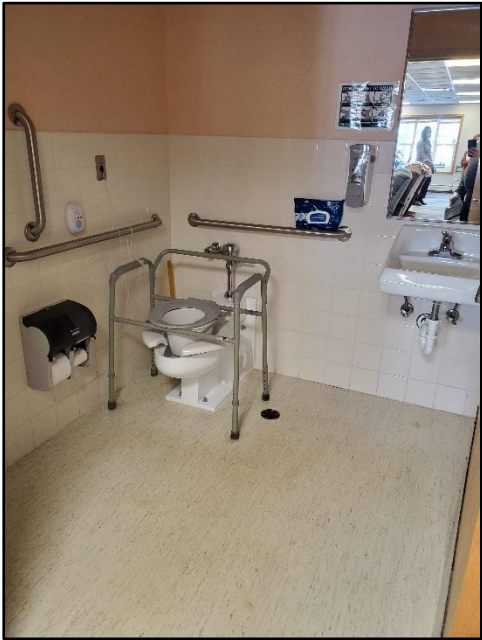
<p>This section is a summary of the individual HCBS characteristics required in the HCBS rule. The findings for each characteristic are identified through the setting attestation documentation, on-site observation or both.</p>	
<p>HCBS Rule requirement</p>	<p>Compliance status (Please select)</p>
<p>Each person at the setting has a written lease or residency agreement in place providing protections to address eviction processes and appeals.</p> <p><input type="checkbox"/> Compliant documentation submitted with attestation</p> <p><input type="checkbox"/> Observation made during on-site visit</p> <p><i>(Enter narrative here)</i></p>	<p>Not applicable to day service settings</p>
<p>Each person at the setting has privacy in his/her sleeping or living unit including a lockable door.</p> <p><input type="checkbox"/> Compliant documentation submitted with attestation</p> <p><input type="checkbox"/> Observation made during on-site visit</p> <p><i>(Enter narrative here)</i></p>	<p>Not applicable to day service settings</p>
<p>The setting facilitates that a person, who shares a bedroom, is with a roommate of their choice.</p> <p><input type="checkbox"/> Compliant documentation submitted with attestation</p> <p><input type="checkbox"/> Observation made during on-site visit</p> <p><i>(Enter narrative here)</i></p>	<p>Not applicable to day service settings</p>

<p>The setting provides people with the freedom to furnish and decorate their bedroom and living unit within the lease or residency agreement.</p> <p><input type="checkbox"/> Compliant documentation submitted with attestation</p> <p><input type="checkbox"/> Observation made during on-site visit</p> <p><i>(Enter narrative here)</i></p>	<p>Not applicable to day service settings</p>
<p>The setting provides people the freedom and support to control their daily schedules including access to food at any time.</p> <p><input checked="" type="checkbox"/> Compliant documentation submitted with attestation</p> <p><input checked="" type="checkbox"/> Observation made during on-site visit</p> <p>Staff and residents confirmed that people at the setting have the freedom and support to control their own schedules, coming and going to and from the setting and eating when they would like. Staff and people at the setting stated that if they are hungry, they can let staff know, and staff accommodate their needs. The setting provides snacks and drinks to people at the setting upon request and without conditions.</p>	<p>Compliant</p>



Coffee area

<p>The setting allows people to have visitors at any time.</p> <p><input checked="" type="checkbox"/> Compliant documentation submitted with attestation</p> <p><input type="checkbox"/> Observation made during on-site visit</p> <p>Staff confirmed that people at the setting may have visitors at any time.</p>	<p>Compliant</p>
<p>The setting provides opportunities for people to seek employment and work in competitive integrated settings.</p> <p><input checked="" type="checkbox"/> Compliant documentation submitted with attestation</p> <p><input checked="" type="checkbox"/> Observation made during on-site visit</p> <p>Staff confirmed that they would accommodate people at the setting who wish to work outside the setting by coordinating transportation, helping the person get ready for work and providing a flexible service schedule. Staff reported that they would save meals or provide a packed lunch depending on the person’s needs. A person at the setting confirmed that she works part-time at a local business.</p>	<p>Compliant</p>
<p>The setting is physically accessible to the individual.</p> <p><input checked="" type="checkbox"/> Compliant documentation submitted with attestation</p> <p><input checked="" type="checkbox"/> Observation made during on-site visit</p> <p>Common spaces were observed to be accessible to people at the setting. At the site visit, grab bars and a raised chair were observed in the setting’s dedicated bathroom. People at the setting confirmed that the setting is physically accessible to them.</p>	<p>Compliant</p>



Accessible bathroom with grab bars and elevated seat

<p>The setting provides people opportunities to access and engage in community life.</p> <p><input checked="" type="checkbox"/> Compliant documentation submitted with attestation</p> <p><input type="checkbox"/> Observation made during on-site visit</p> <p>The setting supports opportunities to access and engage in community life. Practical purposes, such as errands and medical appointments are supported, as well as personal experiences, such as social and family outings, faith-based activities and meals in the community.</p> <p>The staff provide information and resources on transportation options to access the greater community. Staff assist people to arrange transportation as needed and many people arrange their own transportation.</p> <p>Activities are tailored with feedback from people at the setting, through meetings, discussions with people and by obtaining their preferences during the admission process and at regular health assessments.</p> <p>Staff confirmed that people at the setting are informed of their right to choose any medical provider.</p>	<p>Compliant</p>
--	------------------

<p>The setting supports the person’s control of personal resources.</p> <p><input checked="" type="checkbox"/> Compliant documentation submitted with attestation</p> <p><input type="checkbox"/> Observation made during on-site visit</p> <p>Staff and people living in the setting confirmed that residents have full control over their personal finances.</p>	<p>Compliant</p>
<p>The setting ensures people’s right to privacy.</p> <p><input checked="" type="checkbox"/> Compliant documentation submitted with attestation</p> <p><input checked="" type="checkbox"/> Observation made during on-site visit</p> <p>Administration confirmed that staff are trained through HCBS settings rule training to respect the privacy of people at the setting. The setting was observed to have a lockable bathroom door where personal cares can be conducted privately as needed.</p>	<p>Compliant</p>
<p>The setting ensures people’s dignity and respect.</p> <p><input checked="" type="checkbox"/> Compliant documentation submitted with attestation</p> <p><input checked="" type="checkbox"/> Observation made during on-site visit</p> <p>Administration and staff confirmed that staff are trained through HCBS settings rule training to ensure the dignity and respect of people at the setting. During the site visit, staff were observed addressing people by their chosen names, and people at the setting were dressed in clothing of their choosing.</p>	<p>Compliant</p>
<p>The setting ensures people’s freedom from coercion and restraint.</p> <p><input checked="" type="checkbox"/> Compliant documentation submitted with attestation</p> <p><input checked="" type="checkbox"/> Observation made during on-site visit</p> <p>Administration and staff confirmed staff are trained on the Minnesota Vulnerable Adults Act and through HCBS settings rule training.</p>	<p>Compliant</p>



Accessible private bathroom with lockable door

<p>The setting optimizes individual initiative, autonomy, and independence in making life choices, including daily schedule and with whom to interact.</p> <p><input checked="" type="checkbox"/> Compliant documentation submitted with attestation</p> <p><input checked="" type="checkbox"/> Observation made during on-site visit</p> <p>People in the setting were observed to lead their own lives and plan their own daily schedules and arrange their days as they would like. Staff confirmed that the programming at the setting accommodates the schedules of the people served in this setting. Staff confirmed that people at the setting are free to choose their own activities and may interact with whomever they like. People at the setting confirmed that staff would accommodate their personal schedules by saving a meal or providing flexibility in meal times and programming.</p>	<p>Compliant</p>
--	------------------

Pictures of the HCBS setting



Benedictine Adult Day Center parking lot with exterior signage and campus bus and van



Recumbent exercise bike and games table



Public bus stop outside the setting



Seating area with seasonal decoration