

Governor's Task Force on the Protection of Children

Joint Child Maltreatment Screening

Presented by:

St. Cloud Police Department
Stearns County Human Services

January 30, 2015



St. Cloud



St. Cloud is the largest population center in the state's central region. Though mostly in Stearns County, St. Cloud also extends into Benton and Sherburne counties.

Stearns County Population: 152,063

City of St. Cloud Population: 66,219

Stearns County: 52,978

Sherburne County: 6,849

Benton County: 6,392



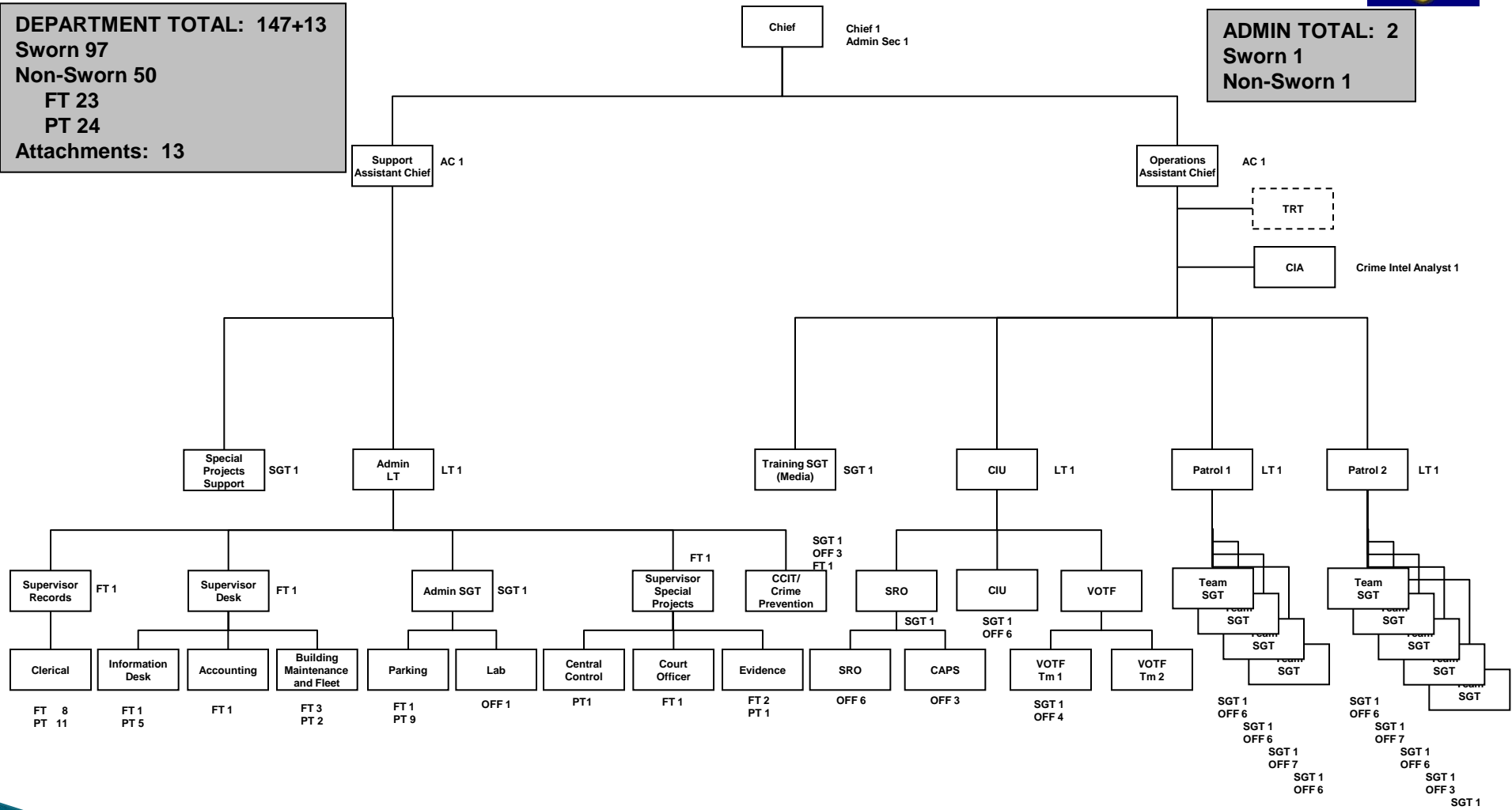
SCPD DEPARTMENT ORGANIZATION



As of 26 Nov 2013

DEPARTMENT TOTAL: 147+13
 Sworn 97
 Non-Sworn 50
 FT 23
 PT 24
 Attachments: 13

ADMIN TOTAL: 2
 Sworn 1
 Non-Sworn 1



SUPPORT TOTAL: 57
 Sworn 9
 Non-Sworn 48
 FT 21
 PT 27
 Attachments: 0

OPERATIONS TOTAL: 88+13
 Sworn 87
 Non-Sworn 1
 Attachments: 13

STEARNS COUNTY HUMAN SERVICES BOARD

GEORGE RINDELAUB, COUNTY ADMINISTRATOR

STEARNS COUNTY HUMAN SERVICES
Mark J. Sizer, Human Services Administrator

**Community Supports
Division**
Janet Reigstad

**Community Corrections
Division**
Becky Bales Cramlet

**Family & Children
Services Division**
Brenda Mahoney

**Finance & Technology
Division**
Dona Pederson

**Gateway Services
Division**
Janet Goligowski

**Public Health
Division**
Renee Frauendienst

Service Entry
Assessments
Greg Knoll

Child Protection Unit A
Sandy Foy

Child Protection Unit B
Michael Heinen

Adolescent & Permanency
Services
Allison Hendrickson

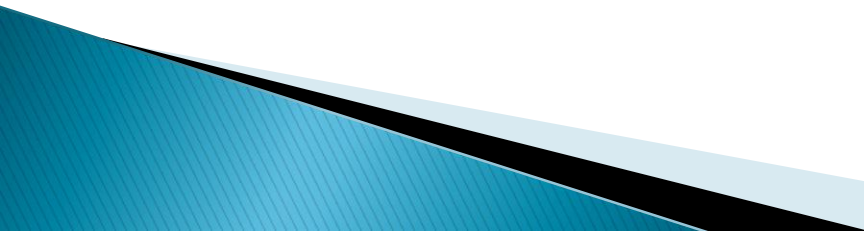
Licensing/Adoption
Paul Weinmann

HS Department Total Employees: 360
Family & Children's Division: 58

Human Services Intake Process:

- Service Entry Unit
 - Staffed by social workers trained in intake and interviewing
 - Reports of child/adult maltreatment
 - Requests for services
- Reports alleging imminent risk
 - Screened immediately
 - Law enforcement notified
- All other reports assigned to coverage supervisor for screening

Cross-Reporting with Law Enforcement:

- All intakes alleging child maltreatment are considered “reports”
 - All reports cross-reported to law enforcement per MN Statute 626.556
 - Average number of reports received per year: 1950
 - Approximately 950 (50%) reports cross reported to SCPD
- 

Child Maltreatment Screening Process:

Child Maltreatment Screen Team: Meets at 8:30 a.m.
Monday–Friday, Friday afternoons, and as needed

Screening Team Composition

HS Supervisor II and/or Division Director

SEU and/or Child Protection Assessment Social Workers

Team Decisions by consensus

Decision based on:

Minnesota Statute 626.556

Associated Criminal Statutes

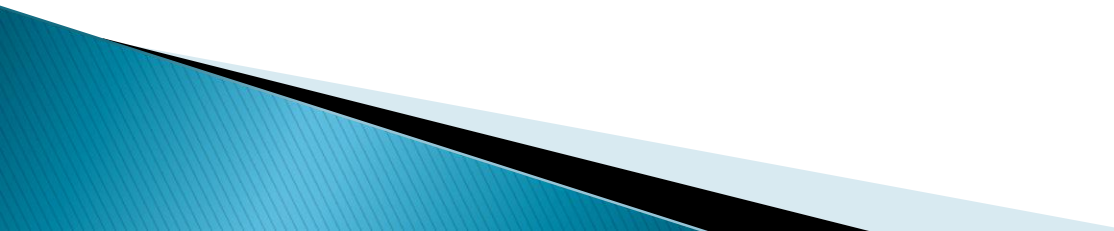
State Child Maltreatment Screening Guidelines

Consideration of past county and state history of services

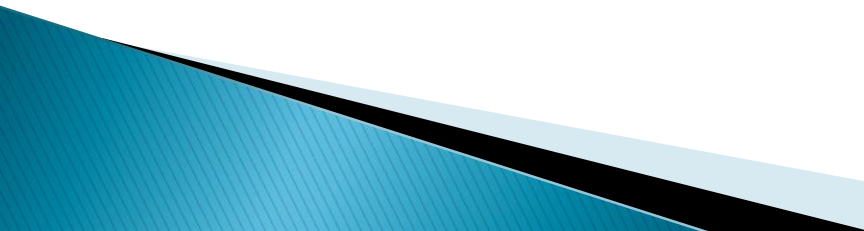
Joint Screening Process with Law Enforcement:

- SCPD present during review of reports
- Sharing of information as allowed under MN Statute 626.556
- Opportunity to discuss additional information
 - Law Enforcement data
 - Follow up by law enforcement if applicable
 - Criminal information
 - Past history of involvement
- Independent determination of action by each department

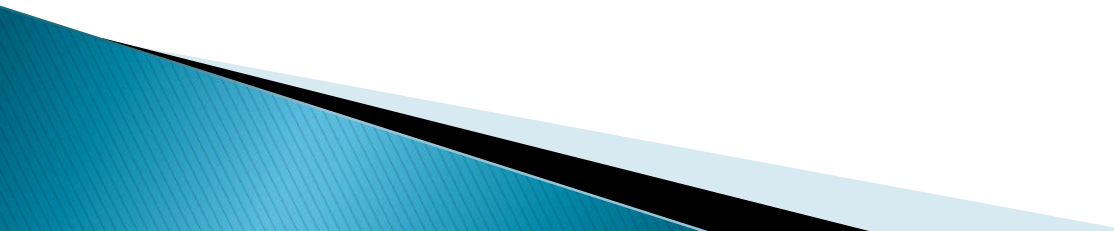
Benefits of Joint Screening:

- Increased safety of children and social workers
 - Improved information sharing resulting in improved screening decisions
 - Immediate assignment of Police Officer
 - Increased efficiency and decrease in redundancy
 - Improved coordination in joint assessments
 - Improved understanding of roles
 - Improved relationships between law enforcement and human services
- 

Why it works:

- Volume of child maltreatment reports
 - High concentration of reports in one law enforcement jurisdiction
 - Geographical vicinity of departments (2 blocks away)
 - Size of departments
 - Established screening process
 - History of collaboration
 - Respect for individual determinations by each department
- 

Considerations for Applicability to other Jurisdictions:

- Geographical locations of departments
 - Number of law enforcement departments within the county
 - Size of departments and number of child maltreatment reports received
 - Available staff resources
- 

QUESTIONS

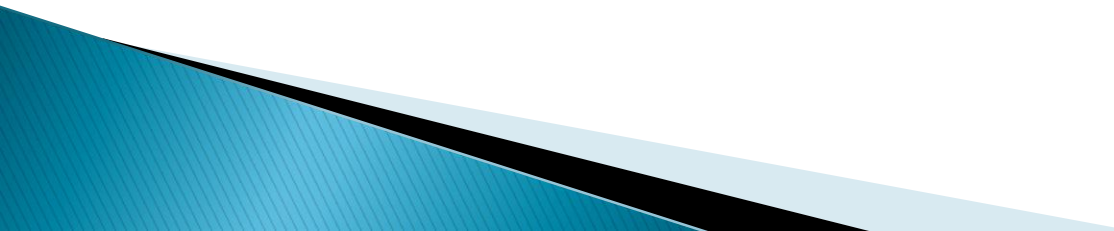
Questions

Questions

Questions

?

Questions



Contact Information:

Sgt. Brett Mushatt, SCPD

Telephone: 320-345-4477

Email: Brett.Mushatt@ci.stcloud.mn.us

Sandy Foy, HS Supervisor II, SCHS

Telephone: 320-656-6140

Email: Sandy.Foy@co.stearns.mn.us

Brenda Mahoney, Division Director, SCHS

Telephone: 320-656-6075

Email: Brenda.Mahoney@co.stearns.mn.us

